



Cyngor Castell-nedd Port Talbot
Neath Port Talbot Council

NEATH Port Talbot COUNTY BOROUGH COUNCIL

Education, Skills and Wellbeing Cabinet Board

27th October 2022

Report of the Head of Education Development

Matter for Monitoring

Wards Affected:

All Wards

Report Title: Youth Service Update

Purpose of the Report:

To provide Members with an update on the Local Authority Youth Service.

Executive Summary:

Neath Port Talbot Youth Service provides Youth Work support to young people within Neath Port Talbot. This is carried out by 47 full time and 69 part time staff using a range of provision.

The service is heavily dependent on external grants with over 75% of its funding coming in from a range of sources; this has led to a shift away from open access services to a more targeted youth work offer.

Covid 19 had a substantial negative impact on young people and the Youth Service. The lockdown period in particular stopped almost all face-to-face youth work and closed the majority of the services to

young people. This significantly reduced the number of young people who we worked with and we are still recovering from this. During 21/22 the Youth Service supported 4,682 young people aged 11-25 which was an increase from 1,597 young people in 20/21.

Community based youth clubs have reopened and during the 2021/22 reporting year supported 917 young people through 11 youth clubs. These clubs provide young people with educational, social and recreational activities as well as giving young people access to youth work advice and support.

The more targeted youth work offer focuses on vulnerable young people and youth workers engage with these young people on a one to one basis and also using group work. Targeted youth work support is offered to Young Carers, LGBT+ young people, young people with speech, language and communication needs, caseload young people from Early Intervention Panel, young people Not in Education, Employment or Training (NEET), Young people who are struggling in schools, young people with emerging mental health issues such as loneliness and social isolation, young parents, care experienced young people, Electively Home Educated young people and young people who are at risk of homelessness.

The Duke of Edinburgh Award Scheme stopped during the pandemic and is now up and running again. We are currently working through the backlog of young people awaiting to complete the award due to the disruption of the pandemic as well as recruiting young people via schools.

The youth service also offers young people relationship and sexuality advice both within schools and in their communities. This is delivered through youth workers who are also trained in sexual health.

.

The Youth Council who provide opportunities for young people to have a say in matters and issues that impact on their lives have been very active during this year. The Youth Council has 42 members from a range of provisions and groups. The Youth Council also has a Youth Mayor, Deputy Youth Mayor, two members of the Welsh Youth Parliament and a member of the British Youth Parliament.

The Youth Service continues to develop and respond to new challenges. This year we have been developing community work in response to recovery from the pandemic and supporting local community's youth provision as well as supporting Ukrainian young people at the Welcome Centre.

Background:

Neath Port Talbot Youth Service currently employs 47 full time staff and 69 part time staff and we are currently recruiting volunteers to deliver a range of supportive and educational activities to young people aged 11-25. Please see the Youth Service Structure attached (Appendix 1).

Neath Port Talbot Youth Service, sets out in its vision to encourage and enable young people to have fun, participate in all opportunities available to them and to gain the skills needed to become happy, confident and fulfilled adults and members of their communities. This is backed up by the service Mission Statement to deliver good quality learning, social and recreational opportunities and activities through highly motivated, well-trained and enthusiastic youth workers in safe and friendly places accessible to all young people.

In recent years, there has been a shift towards more targeted youth work across Wales and within Neath Port Talbot, which has come from external funding sources. During 2018/19, grant funding equated to 65% of the Youth Service budget and this has increased again for the 2021/22 financial year with 76% of the Youth Service budget coming from external grants.

Youth Service Provision

The Youth Service contact with young people dropped during the pandemic to 6% of 11-25 year olds (1,597 young people) for 2020/21. This increased during 2021/22 to 19% of 11-25 year olds (4,682 young people). The Youth Service continues to provide a mix of universal, targeted and specialist provision.

Youth Clubs

Neath Port Talbot Youth Service still delivers youth work to young people aged 11-18 via 11 community based youth clubs. These clubs are situated in Blaengwynfi, Croeserw, Cymmer, Sandfields, Taibach, Bryncoch, Cimla, Crynant, Cwmllynfell, Glynneath and Seven Sisters. We also have a twelfth Bryn Youth Club has been closed due to recruitment issues. (See Appendix 2).

Youth Clubs vary in relation to the number of nightly sessions and opening times offered to young people. Our Community Based Youth Clubs closed during the pandemic and this has resulted in a demand for Community base youth provision that we are currently developing across in areas across the borough. New community-based provisions are being looked at in Neath Town Centre, Aberavon, Cearwern, Godergraig, Aberavon, Resolven, Tonna, Trebanos and Pontardawe. The Community based team are also looking into support Bryn Youth Club.

Youth clubs plan, deliver and evaluate their work systematically, measure outcomes achieved with young people. Outcomes include accreditation programmes, Junior Leaderships Awards and certification of achievements that provide recognition of young people's learning in relation to our curriculum framework. Young people are also offered an opportunity to engage in a number of trips and events throughout the year that not only celebrate their achievements but also encourage new cultural learning.

Ongoing issues impacting on our community based youth clubs include staffing pressures due to recruitment issues, and our club

staff have also told us that there is added pressure on staff who are now having to work with young people who present complex health issues although not exhaustive they include; self -harm, sexuality and relationships issues.

Targeted provision

Targeted provision is much more focused and can be aimed at specific groups of young people with particular needs such as young people who are Not in Education, Employment and Training (NEET) or targeted due to certain characteristics such as young carers, LGBT or Speech and Language. This provision is funded through a variety of external sources including, WG Youth Support Grant, Families First, Community Renewal Fund Grant and Communities First Legacy Grant. Each funding stream has its own requirements and is subject to change dependent on the direction of the funding provider -

Families First

Focuses on One to One Caseloads, Vulnerable Groups and Young Carers.

Youth workers focus on early intervention and prevention activities for young people. Caseloads are allocated via the Early Intervention and Prevention Panel. Vulnerable groups supported at present are the LGBT group, Speech, Language & Communication group and finally the Young Carers Club. Through Families First, youth work interventions:

20 young people demonstrate an improvement in their speech, language and communication skills (100%) (20 out of 20 evaluated)

64 Young people demonstrate an improvement in emotional/mental wellbeing (90.1%)

49 Young people report an improvement in own resilience (69%)

54 Families that report an improvement in family resilience (76%) and

51 young people have stated that their family relationships have improve (71.8%).

Welsh Government Youth Support Grant

Focus on 3 main areas:

NEET young people aged 16-25;

Youth Mental Health & Wellbeing;

Youth Work support for at risk of Homelessness young people.

NEET Support

The NEET aspect of this grant has been provided to enable the authority to implement the Youth Engagement and Progression Framework along with employing The Engagement and Progression Co-ordinator post who oversees the development of systems and procedures to ensure young people are able to make an effective transition to post 16 employment, education and training. Working with schools, Careers Wales and post 16 education and training providers the co-ordinator focuses on early identification of young people at risk of becoming NEET and re-engaging those that are NEET into employment, education and training.

The Keeping in Touch team have helped identify tier one young people whose status is unknown to Careers Wales and move them into appropriate tiers. The KIT workers successfully moved 101 young people into a more appropriate Tier, which equates to 70% - target was 70%

The team also helped NEET young people achieve successful outcomes. 210 young people received support target was 150 144 young people have achieved a successful outcome, which equates to 69% - target was 60%

The 144 young people having a positive outcome includes outcomes such as entering employment, gaining a qualification or engaging with other services from a referral.

Some of these outcomes included 10 young people entered further learning, 97 young people entered paid employment and 67 young people receiving a recognised qualification.

Youth Mental Health & Wellbeing

The Welsh Government funded Youth Support Grant is aimed at the early identification and support of young people with emerging mental health, emotional or wellbeing issues and young people who are lonely and socially isolated.

This funding provided activities and support for young people. The Young Parents group completed a 10 week Family Links Nurture Programme in partnership with Flying Start. The young parents group were also selected for a Royal Visit by the Countess of Wessex. A strong working relationship has been build up with the Education Welfare Service in order to support the Electively Home educated community. This team support the following groups:

- Electively Home Educated pupils in Years 7-11
- Young Parents
- Young Carers
- LGBT young people
- Care experienced young people

Youth Work support for at risk of Homelessness young people

Welsh Government provide funding to support young people aged 14-24 who are at risk of homelessness though targeted youth work.

This funding is used to support young people using a 3 tier approach,

- Awareness raising workshops for schools & youth groups developed in partnership between the statutory and voluntary sectors and young people.

- One-to one or structured group work support for young people identified as being at high risk of youth homelessness.

- Supporting young people of families in temporary accommodation.

Joint project work with housing providers and includes helping families and young people in the Ukrainian Welcome Centre. The need for this was identified due to parents in temporary accommodation reviewing support with their situation and a lack of support for young people being available.

Community Renewal Fund (CRF)

The CRF Next Steps provision replaced the ESF Cam Nesa Project and continues to supported young people who were NEET. The Youth Service has been the lead in a 5 strand approach including working with Schools, Careers Wales, Skills and Training and Youth Workers and have achieve the following results:

Supported 527 economically inactive young people, supported 137 unemployed young people, and achieved 551 Life Skills outcomes and 38 qualifications.

Next Steps also support 6 young people into education and training, this is currently low, not only within NPT but across Wales and the UK, this is thought to be due to young people seeking and entering employment, due to the cost of living crisis.

In addition to the targets, we have supported 48 young people into employment and 42 young people have gained 1 or more qualifications not on the Qualifications in Wales list.

Communities First Legacy Grant

This grant provides School based youth work support for young people aged 14-16 in years 9-11 of all secondary schools within Neath Port Talbot. The Legacy Youth Workers support young people identified by their schools, using the Vulnerability Assessment Profile and discussions both within and outside of the school environment. The Legacy team also transition with the young people at the end of year 11 to best support them into a positive Education, Employment or Training destination.

Year 11 destination statistics collated by Careers Wales indicate that the number young people transitioning from school into Not in Education, Employment or Training (NEET) has reduced steadily from 7.1% in 2009 to 2.1% in 2020. The latest information from Careers Wales shows Neath Port Talbots figure of 2.4% was achieved last year 2021 (See Appendix 3). Legacy staff are feeling

the impact of the pandemic on school leavers and the increase in support they need to transition. This still leaves us above the Welsh average.

We are expecting a difficult time with transitions this year due to the knock on effects of the pandemic on school leavers.

Duke of Edinburgh Award Scheme

The Duke of Edinburgh (DofE) Award Scheme had been hit badly by the pandemic and we also had our long standing DofE Officer leaving. The post is now occupied and we have achieved the following results this year:

158 young people have signed up for DofE this year;
200 young people completing the final expedition at Bronze Level,
29 young people at Silver Level and
11 young people at Gold Level.

This has resulted in 178 achieving the Bronze Award, 10 the Silver Award and 5 the Gold Award.

We are currently working with all schools, young people, external providers and the Duke of Edinburgh Award Head Office to continue to build the award within NPT.

Relationship and Sex Education [RSE]

The Youth Service make a significant contribution to the delivery of RSE within the local authority and support the lessons in the locally devised RSE Key Stage 3 pack. The pack enables Teachers, Youth and Nurse Practitioners to deliver RSE in secondary educational schools across NPT. The Youth Service manages the NPT RSE group, which brings together all relevant partners involved in RSE reporting to the VAWDASV Leadership Group.

Relationships Advise Drop in Service [RADS]

A free, confidential, non-judgemental service accessible in a number of our youth clubs, schools and colleges at convenient times for young people and delivered by highly trained youth workers in the

field of sexual health and young people. RADS staff deal with a range of issues including; safe relationships, contraception, pregnancy, abortion, sexually transmitted infections (STI's), LGBT and many other health issues. Additionally, they provide barrier contraception, pregnancy testing, advice and support to access secondary sexual health and other health service to address; substance misuse, eating disorders, smoking cessation, sexual exploiting, abusive relationships, self-esteem and mental health issues. The Youth Service provides a daily on-call emergency service for RADS.

Youth Council

The Youth Council is supported by the Youth Service who fund a dedicated worker, venue and travel costs to projects and events, which include reward activities. The local authority cabinet members are also considered partners along with the young people resident in NPT.

We are currently recruiting for the new Youth Council members through all secondary schools, partners and young people. The Youth Council have will increase the number of seats available to young people and will consists of young people aged 11+ who were elected through a democratic process. The Youth Council is the representative voice of young people aged 11-25 in Neath Port Talbot and has been recognised as the first point of contact for youth engagement in decision making by the Local Service Board and County Councillors.

The members come from schools and a range of targeted groups (See Appendix 4). The Youth Council have representatives on the British Youth Council, both Welsh Youth Parliament Members, Children's Commissioner Advisory Panel, and Abertawe Bro Morgannwg Youth Health Board and also on the advisory group for ongoing health related projects. This work involves members attending meetings to feed in to national participation events and

campaigns/promote youth council work locally to raise the profile of NPT Youth Service and local authority.

Youth Mayor and Deputy Mayor

The Youth Service continues to support the elected Youth Mayor and Deputy Youth Mayor. Both act as the voice for all young people across the local authority and will shadow the Mayor of Neath Port Talbot. We are continuing to build on the calendar of events during this year as previous years have been disrupted by the pandemic. The calendar is managed in partnership between the Mayor office and the Youth Service.

Food & Fun

Food and Fun is run each year by the Youth Service and gives children the chance to take part in various fun and physical activities, learn about food and nutrition, as well receiving a healthy breakfast and lunch. St Joseph's Catholic School and Cefn Saeson Comprehensive joined the scheme this year to bring the total to seven schools, delivering the scheme to more than 350 children.

To help deliver the activities that run throughout the day, the Youth Service teamed up with Swansea University, NPT Pass, Swansea Bay University Health Board, University of Wales Trinity St. David, and the Council's Play Team. Activities such as five-a-side football, arts and crafts, interactive lessons about nutrition, table tennis, archery were delivered as well as arranging day trips.

Financial Impacts:

There are no implications linked to the report but Members should note that the Youth Service is now 76% externally funded through external grants all of which are currently either annual funding streams or are due to expire 31st March 2023.

Integrated Impact Assessment:

There is no requirement to undertake an Integrated Impact Assessment as this report is for monitoring purposes.

Valleys Communities Impacts:

No implications.

Workforce Impacts:

No implications.

Legal Impacts:

No implications.

Risk Management Impacts:

Funding streams associated with Neath Port Talbot Youth Services work is currently funded through external grants, which currently expire on the 31st March 2024. There is ongoing work seeking extensions on the Communities First Legacy and a Shared Prosperity Fund bid to help sustain community youth work and post 16 youth work.

Consultation:

There is no requirement for external consultation on this item.

Recommendations:

This report is for monitoring only.

Reasons for Proposed Decision:

This report is for monitoring only.

Implementation of Decision:

This report is for monitoring only.

Appendices:

Appendix 1 – Youth Service Structure

Appendix 2 – Youth Clubs Info

Appendix 3 – Destination figures

Appendix 4 – Youth Council Membership

List of Background Papers:

N/A

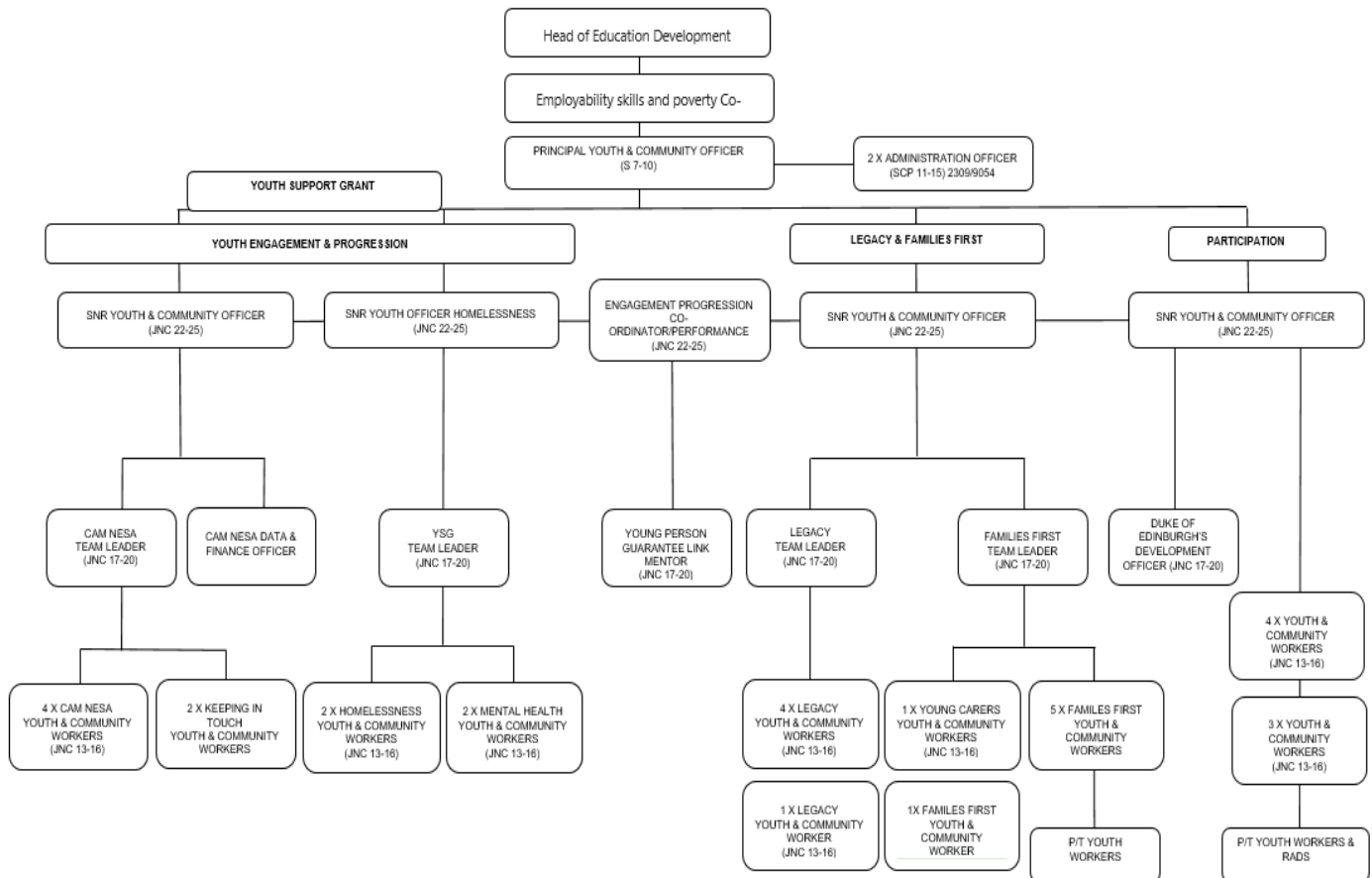
Officer Contact:

Chris Millis Head of Education Development, Telephone 01639 763226 e-mail c.d.millis@npt.gov.uk

Angeline Spooner-Cleverly, Employability, Skills and Poverty Coordinator, Telephone 01639 686044 e-mail a.spooner-cleverly@npt.gov.uk

Jason Haeney, Principal Youth and Community Officer, e-mail j.haeney@npt.gov.uk

Appendix 1



Appendix 2

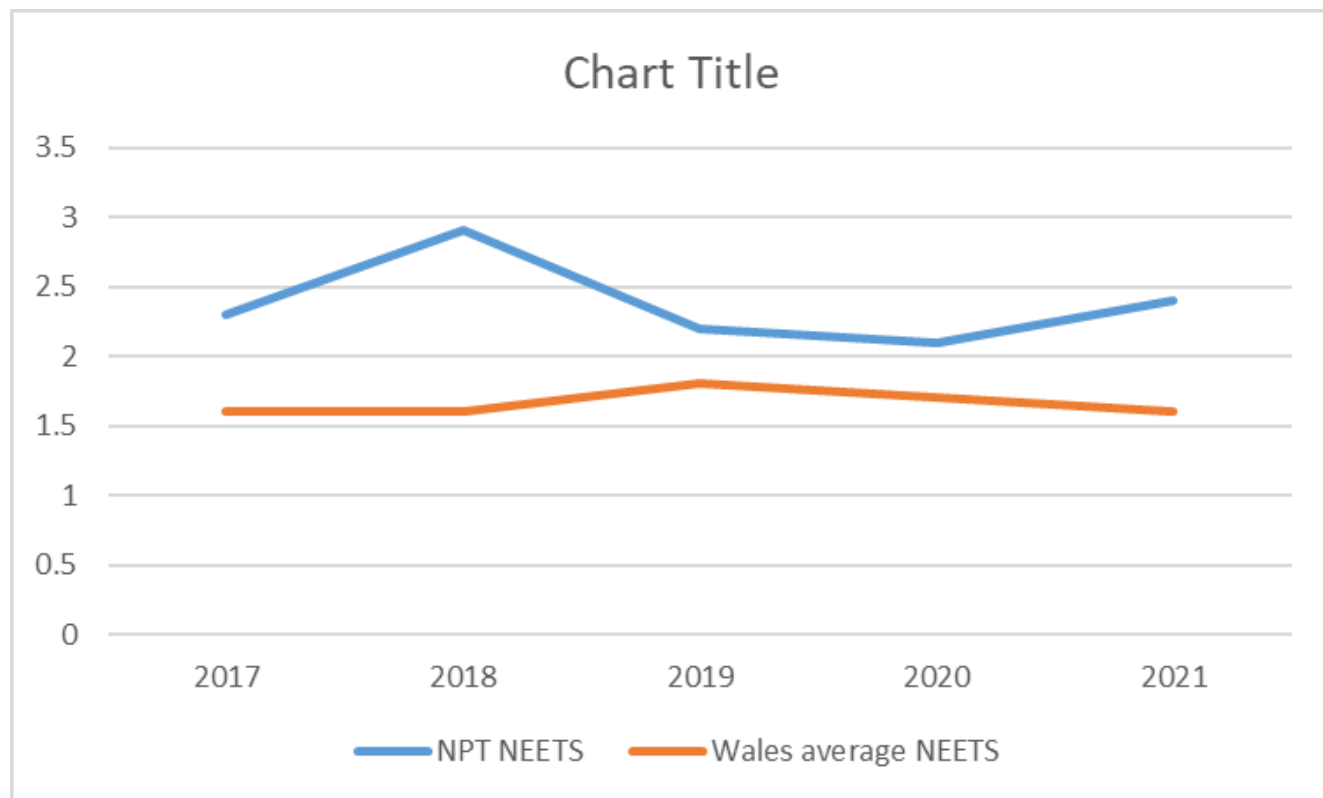
Youth Clubs In Your Area

Youth Club	Location	Meeting Times
Cwmillynfell Youth Club	The Welfare Hall	Tues 6:30pm-8:30pm Weds 6:30pm-8:30pm
Bryn Youth Club	The Community Centre	Fri 6:00pm – 8:00pm
Blaengwynfi Youth Club	The Library and Public Hall	Wed 5:45pm-7:45pm
Glynneath Youth Club	The Training Centre	Thurs 6:30pm-8:30pm
Seven Sisters Youth Club	The Community Centre	Thurs 6:00pm-8:00pm
Bryncoch Youth Club	The Community Centre	Thurs 7:00pm-9:00pm
Crynant Youth Club	The Community Centre	Tues 6:00pm-8:00pm Fri 6:00pm-8:00pm
Cymmer Youth Club	Afan Valley Swimming Pool	Thurs 6:30pm-8:30pm
Taibach Youth Club	The Community Education Centre	Tues 7:00pm-9:00pm Thurs 7:00pm-9:00pm
Cimla Youth Club	The Community Centre	Mon 6:00pm-8:00pm
Sandfields Youth Club	YSGOL BAE BAGLAN	Tue 7:00pm-9:00pm Thurs 7:00pm-9:00pm
Croeserw Youth Club	The Community Enterprise Centre	Mon 6:00pm-8:00pm

 **Youth Port Talbot Youth Service**

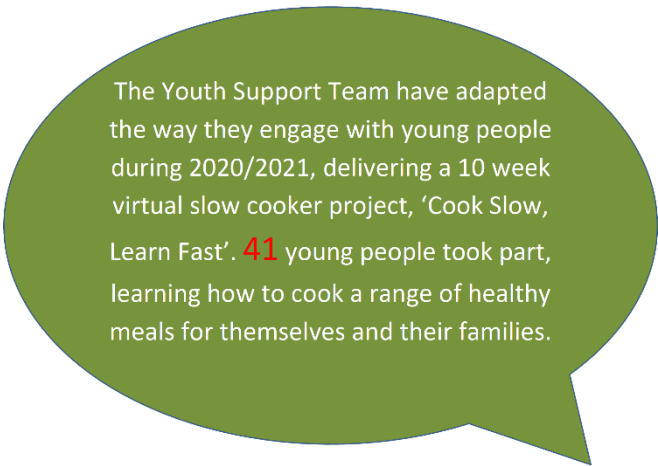
For more information contact the Youth Service on 01639 763030

Appendix 3

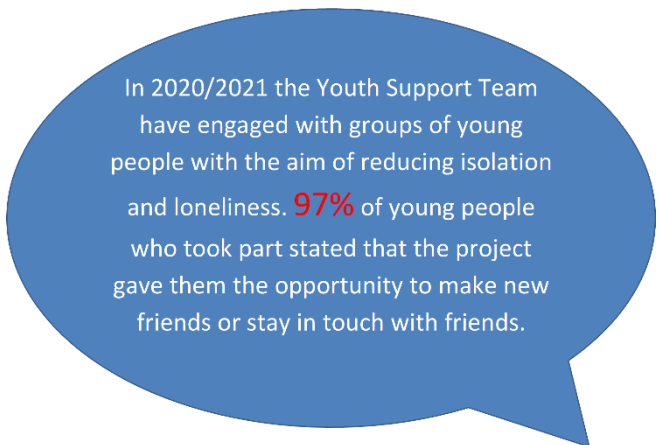


Appendix 4

Youth Council Members 2022			
Schools			
Bro Dur – 4 reps		Dwr Y Felin – 4 reps	YBB – 4 reps
M P		E H	K P
M G		R D	L M N
Vac		Vac	L G
Vac		Vac	Vac
Cwm Tawe – 4 reps		Cwm Brombil – 4 reps	Cefn Saeson – 4 reps
A P		J P	C A
P J		E W	G S
F M		Vac	J D
L T		Vac	M J
St Josephs – 4 reps		Llangatwg – 4 reps	Ystalyfera – 4 reps
A J		E H	A S
A L		E G	F D
G R		E D	Vac
S O		Vac	Vac
Groups			
Neath College – 4 reps		Young Carers – 2 reps	LGBTQ+ - 4 reps
M K		A V	W
Vac		E J	D F
Vac			C I
Vac			GSA
Speak and Language – 2 reps		Retained Members – 8 reps	6 Form – 4 reps
G H		B T	
M J		B C	
		O L	
Vulnerable Learners – 2 reps		I W	
J K		E S	
O J			



The Youth Support Team have adapted the way they engage with young people during 2020/2021, delivering a 10 week virtual slow cooker project, 'Cook Slow, Learn Fast'. **41** young people took part, learning how to cook a range of healthy meals for themselves and their families.



In 2020/2021 the Youth Support Team have engaged with groups of young people with the aim of reducing isolation and loneliness. **97%** of young people who took part stated that the project gave them the opportunity to make new friends or stay in touch with friends.